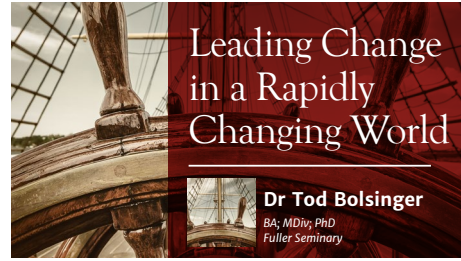


MISSION WEEK '17 HIGHLIGHTS



TUE
30
MAY
8am-3pm



**Leading Change
in a Rapidly
Changing World**

**block
course**
26-30
June 2017

Dr Tod Bolsinger
BA, MDiv, PhD
Fuller Seminary



COMMUNITY FORMATION

Community Lunches

Join us on Monday and Tuesday for our Community Lunches. Try sitting next to someone you don't know for a change?

Chapel Speaker

Rev Dr Mark Johnston from the Knox Centre for Ministry and Leadership leads us in Chapel this week. He will be talking from Psalm 71.

Tuesday Lunchtime Interview:

Charles will be interviewing the Baptist Union's Manatū Iriiri Māori Ministries Kaihautu, David Moko.

Wednesday Prayer

Following on from David's interview and focus on bi-culturalism, John Tucker will lead us as we pray for 'bi-cultural Carey.'



**take
a week** AND DEEPEN
YOUR
THEOLOGY
AND FAITH

**block
courses**
semester two
2017

**Christian
Spirituality**
ALAN JAMIESON
10-11 AUG & 11-13 SEP

**Family and
NZ Society**
CARLTON JOHNSTONE
4-8 SEP

**Worship
Then & Now**
MALCOLM GORDON
28 AUG - 1 SEP

**HOME
OR
AWAY?**
LOCATING SPORT AND LEISURE
IN CHRISTIAN FAITH
AND PRACTICE

11-13 JULY
2017

Connections

Recently the pohutukawa tree in front of my home was thinned, revealing a view I haven't seen for a while. Now from my window I can see through its branches, over the thick black power lines, beyond the houses and factories to the Manukau Harbour. Power pylons mark out the beachfront—a triumph of utility over nature. The water is sometimes blue, sometimes smooth reflective quicksilver, often grey or low-tide brown. Directly in my line of vision an old rock jetty with what looks like a prow at the end juts out into the harbour like a giant waka. Bounding the harbour is Mangere's maunga, with Mangere Bridge township nestled at its base.

Occasionally in the foreground a furball otherwise known as the cat reposes on the concrete pillar by the gate, surveying her domain. Neighbourhood pets seem drawn to this south side of the house. My mate Henry the black labrador dog begs to be allowed into this space every time he visits, which I thought was heart-warming until I realised it was only because of his unsavoury interest in cat deposits. He is now banned from the area.

In all this I have a sense of being grounded and at the same time of breathing out. Perhaps I could describe it as a breathing outward of the spirit.

Last week ex Carey students Sarah and Paul Beisly spoke at lunchtime about their work in one of India's red light districts, where they have set up The Loyal Workshop business enterprise which is helping change the lives of women street workers. Spirituality is very much part of everyday life in this place that is now their neighbourhood, to the extent that it has been a culture

shock for them coming back to New Zealand with its western mind/spirit separation.

Sarah and Paul said they miss the wide-open spaces of Aotearoa. My mind wanders to the spirit, the wairua, of the land, and to my cluttered view of the sea. Mind and spirit. Here I am, mired in the secular West!

Recently I attended a house warming. A friend's brother who is autistic, had moved from his childhood home, a deeply challenging and frustrating process for him and for the whanau and friends who assisted. From his new place he has a glimpse of the Waitemata, the harbour he grew up by. We warmed up his new home in our raucous way. I'm sure I caught a slight glimmer of amusement in his eyes. My prayer is that in the quiet of his new home he may many times gaze out to the sea.



Liz Tisdall | Archivist & Librarian